
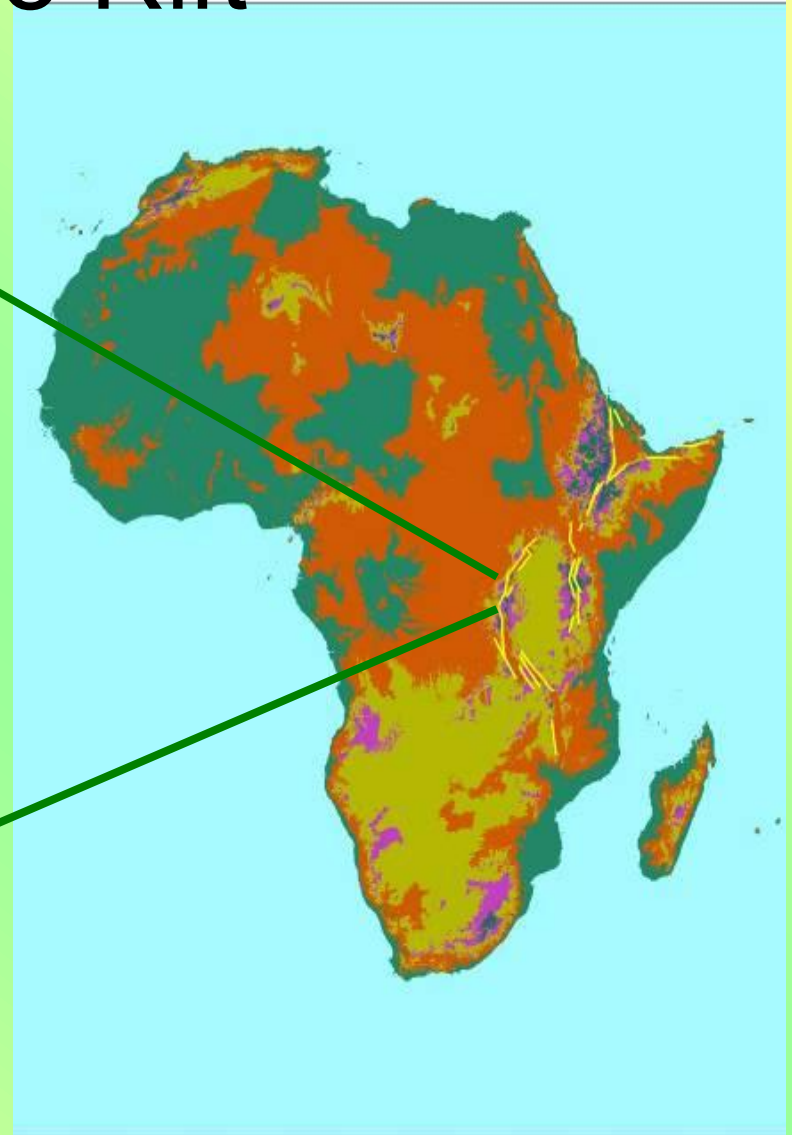
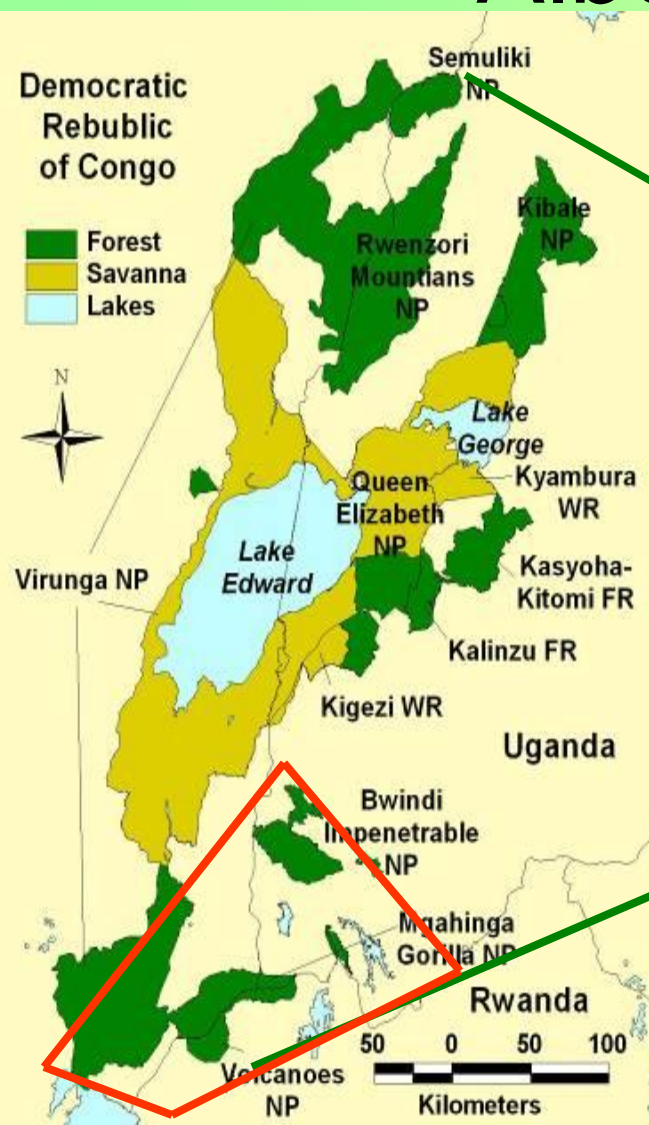


The Greater Virunga Transboundary Collaboration



Sam Mwandha: Executive Secretary,
Greater Virunga Transboundary Collaboration Secretariat

Greater Virunga Landscape/ Central Albertine Rift



The red box shows the mountain gorilla habitat

The Greater Virunga Transboundary Collaboration

- This a mechanism for coordination of conservation and natural resource management initiatives in the Central Albertine Rift.
- Initiated by the Uganda Wildlife Authority (UWA), Institut Congolais Pour la conservation de la Nature (ICCN) and the then Office Rwandais du tourism et des Parcs Nationaux (ORTPN) now Rwanda Development Board (RDB)
- Started as informal meetings between the field (park) staff of the Protected Areas institutions and stakeholders spearheaded by IGCP
- Later the PAA heads were brought on board and signed an MoU for the collaboration - 2004
- The Ministries responsible for the three agencies have also discussed and signed declarations in support of the collaboration – 2008, 2009
- The process for legalisation of the collaboration through a treaty is in advanced stages

The Approach for the establishment of the Collaboration

Phase I: Field-based coordination and collaboration

- Field collaborative activities include:
 - coordinated patrols, joint training,
 - Regional planning and communication - TSP
 - Regional monitoring of gorilla and its habitat
 - Learning process: exchange of experiences
 - Mountain gorilla tourism: harmonization of rules & regulations, benefit sharing policy.
- Phase II: Formalization of regional collaboration
- Phase III: Formal designation of TBNRM

Importance of collaboration in the region

- Highest Species Richness and number of Endemic Vertebrates in Africa – including mountain gorilla
- Largest mammal biomass recorded
- Rich biodiversity - diverse habitats
- Numerous challenges to conservation in the region (poverty, high population densities, land fragmentation, insecurity)
- Conservation is at a cost to the local population through crop damage, threat to lives

Species Richness and Endemics



Largest mammal biomass recorded



Rich biodiversity - diverse habitats



Some threats in the landscape



Poaching



Landscape fragmentation



About 45,000 tones of charcoal is consumed in Goma alone each year



Poverty



Crop damage

Many of the Threats that are transboundary in nature



Current Status of Collaboration

- Have a functional Transboundary Secretariat
- In process of securing government recognition of the secretariat as an inter-state agency - Working with the three governments to finalise the Treaty establishing the Secretariat
- Have clear strategy for implementation – Transboundary Strategic Plan developed
- All the organs of Greater Virunga Transboundary Collaboration are operational
- The secretariat has received funds for implementation of the TSP from the Netherlands Government. Further support from US State department and WWF Sweden also received.

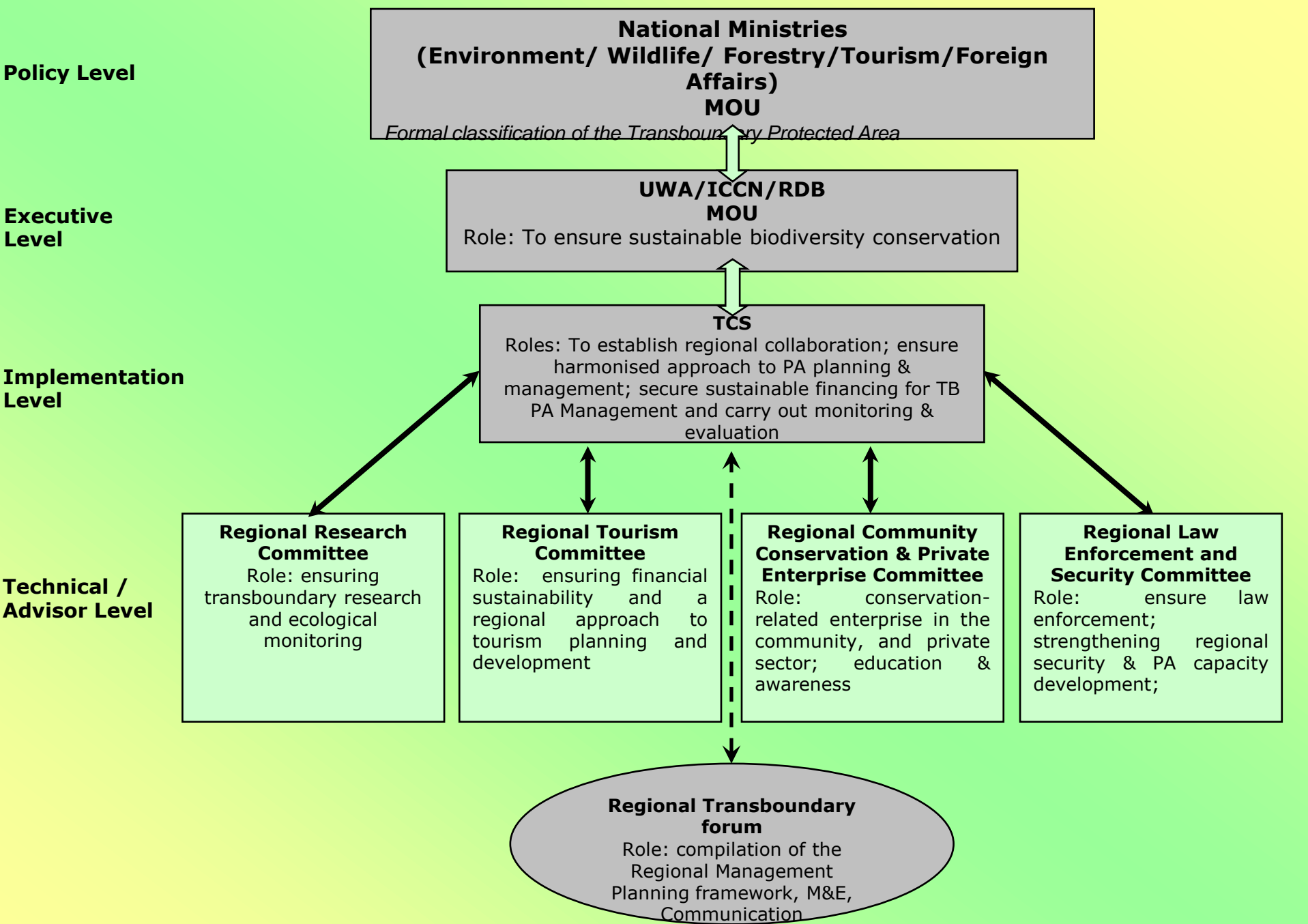


Figure 2: Institutional Set-up and Linkages

The Role of TCS

- Coordinate the implementation of the Transboundary Strategic plan
 - Ensure harmonised approach to PA planning & management;
 - Secure sustainable financing for TB PA Management
 - Carry out monitoring & evaluation
 - Coordinate Learning and exchanges of best practices across the CAR

Keys areas of collaboration identified in the Transboundary Strategic Plan

- Landscape management
- Law enforcement and security for the communities and wildlife
- Education and awareness
- Economic development for the neighbouring communities
- Financial sustainability for the PAAs
- Effective management capacity

For success of the above there should be an enabling environment and effective collaboration

Examples of implementation (1)

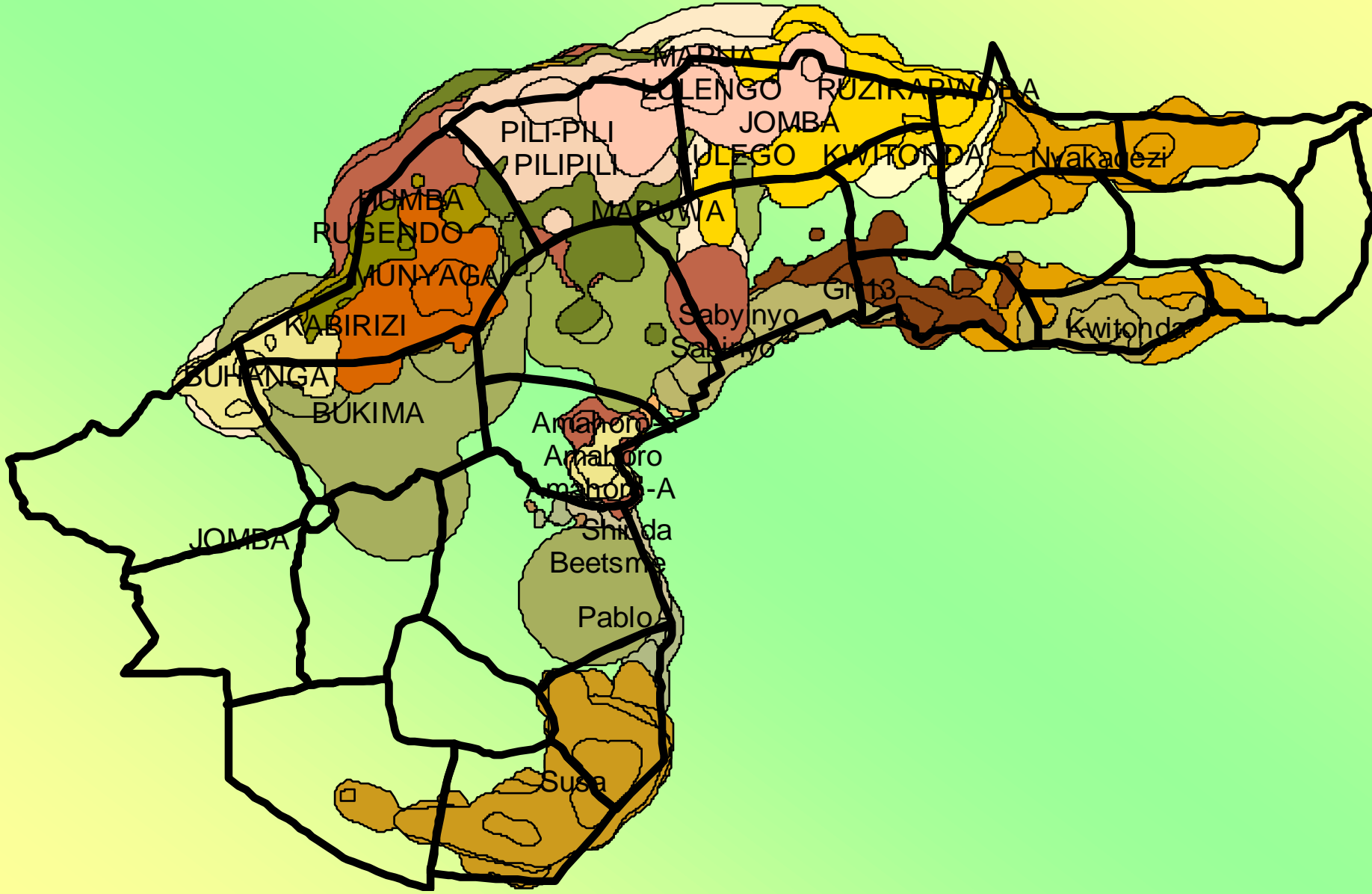
Landscape management

- Bamboos planting to manage erosion in the landscape, provide raw material for crafts away from protected areas
- Community nurseries for agroforestry trees on own land
- Collaborated research and monitoring especially for Gorillas with various stakeholders involved e.g. gorilla census, health monitoring and RBM

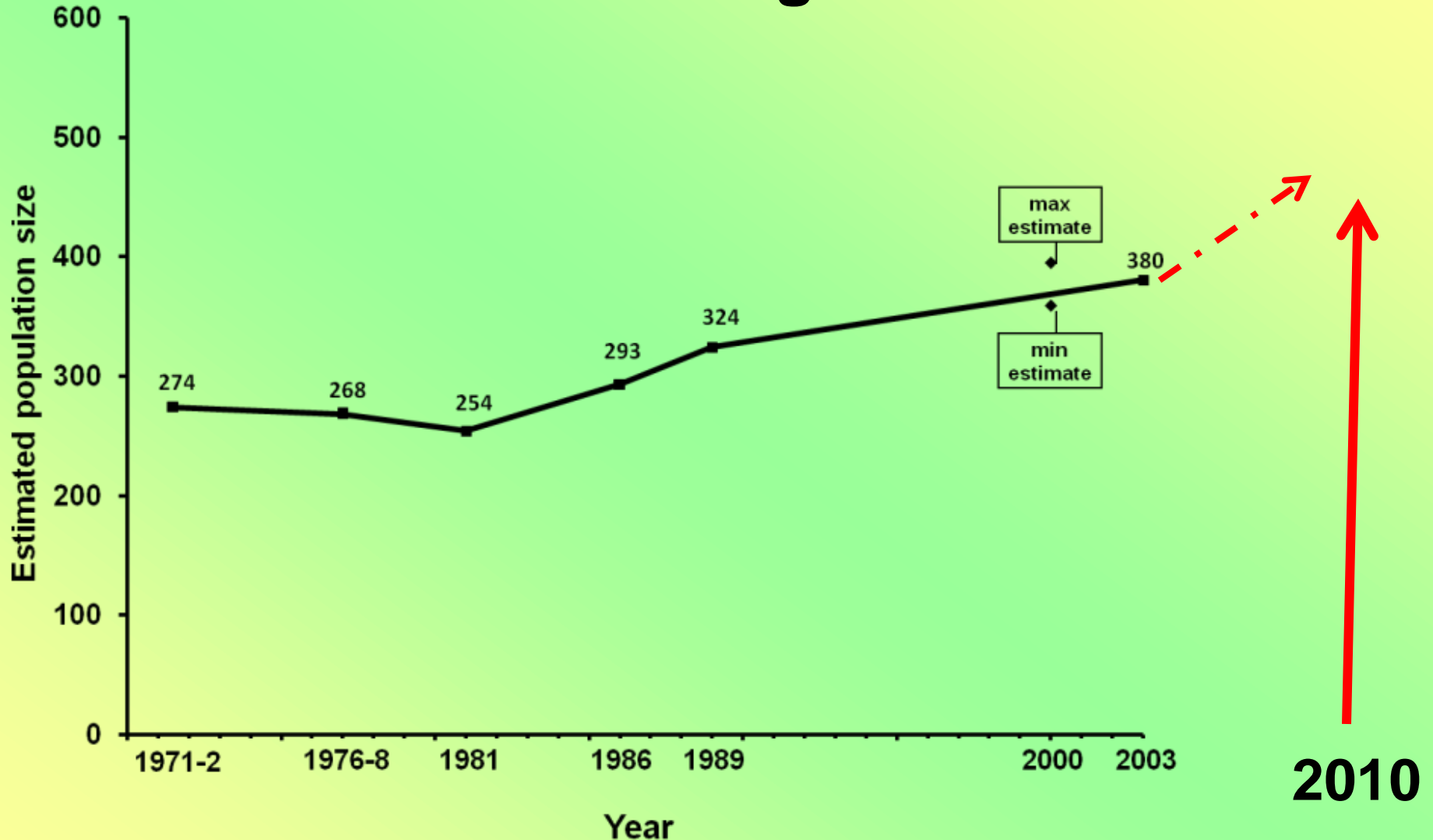
Comparison of Bwindi population size and structure over the years

	1997	2002	2006
Total population estimate	300	320	340
Number of groups	28	27	30
Number of solitary males	7	10	11
Mean group size	10.2	11.3	10.8
Range	2-23	3-25	3-28
Proportion immatures	37%	36%	36%
Proportion multi-male groups	46%	44%	23%
Number of habituated groups	3	5	5
Individuals in habituated groups	52	72	76
Proportion of population habituated	17.3%	22.5%	22.4%

Habituated Gorilla Distribution in Virunga Massif (2000-2009)



Estimated population trends for Virunga mountain gorillas



Note continued increase in gorilla population since the initiation of collaboration between the PAAs about 15 years ago.

Examples of implementation (2)

Law enforcement and security

- Coordinated patrols
- Sharing of intelligence information on illegal activities
- Regular meetings including immigration, customs, government security agencies

Examples of implementation (3)

Education and awareness

- Exchange visits
- Communication strategy for GVTCS
- Planned field visit for media in May



Examples of implementation (4)

Economic development for the neighbouring communities

- Construction of community tourism/enterprise centres in the three countries
- Training of partners esp. communities involved in tourism activities
- Bamboos planting for handicraft material
- Bee keeping activities
- Tourism trail for the Batwa in Uganda

Community Commercial Centres for training and marketing of handcraft products - Kinigi Rwanda

PROPOSED KINIGI COMMUNITY COMMERCIAL COMPLEX

PERSPECTIVE D'ENSEMBLE 3



Community Centre in Kisoro Uganda



Energy and enterprise centres in DRC



Co-operative centre at Bukima DRC



Energy centre at Munigi DRC



Examples of areas of support to communities



Tree nurseries



Cultural tourism



Water harvesting



Bee keeping/honey production



Examples of areas of support to communities



Crafts from
bamboo



Alternative energy
Briquette project



Examples of implementation (5)

Financial sustainability for the PAAs

- Road rehabilitation in DRC linking Rumangabo and Bukima that has enhanced tourism and contributed to increased incomes of Virunga park
- Revenue sharing from gorilla tourism (gorilla crossing boundaries)



Why institutionalize the collaboration

- Need for legal recognition to enable effective coordination
- Require recognition of the three countries to initiate transboundary policies and plans
- Operationalise the organs of the collaboration
- Legal mandate will enable the organs of the collaboration to take binding decisions
- Legitimacy to fundraise and manage resources



Thank you

